



Culturally Relevant Pedagogy: Diversity, Equity & Inclusion

Presentation at the Early Learning and Child Care Conference
Conestoga College, Ontario April 2, 2016

Atkinson Centre for Society and Child Development

Every opportunity for every child from the start



UNIVERSITY OF TORONTO
OISE | ONTARIO INSTITUTE
FOR STUDIES IN EDUCATION



Agenda

- What does diversity, equity & inclusion mean to you?
- Acculturation attitudes
- How Does Learning Happen?
- How do we create inclusive-positive settings
- Recipes for critical-reflective practice



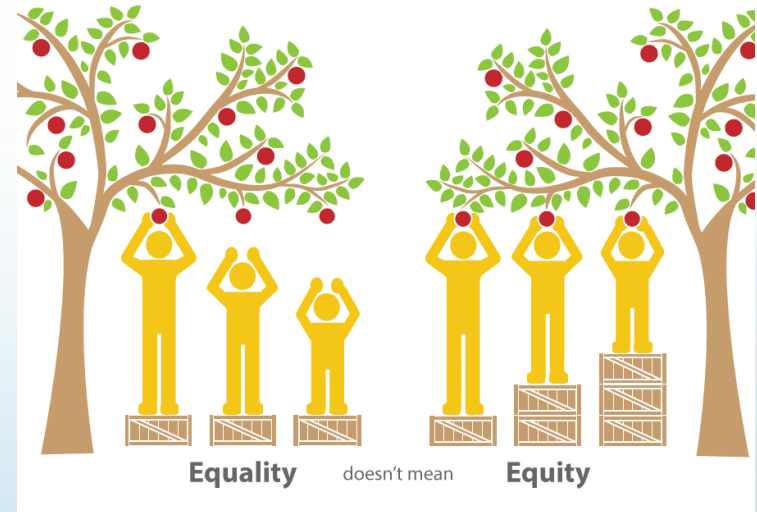
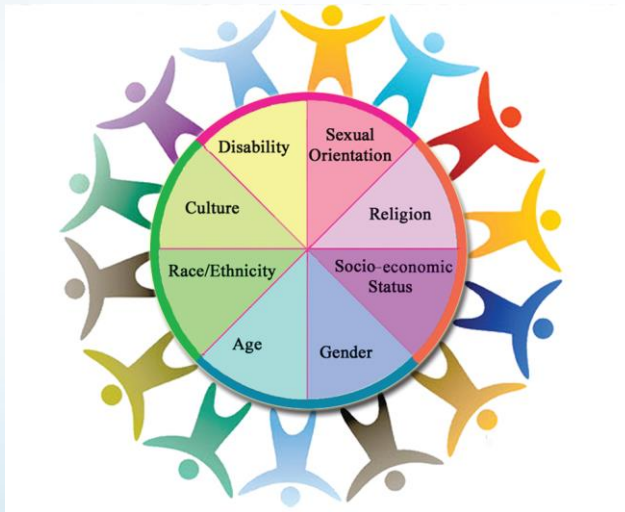
Professional Learning Goals

- To understand the impact the features in our society has on immigrants
- To develop practices based on research on immigrants
- To rethink our understanding of family centred practices
- Heightened sense of awareness - unpacking biases; focusing on our unintentional biases as a result of our privileges
- Development of culturally responsive practice



Large Group Activity

What does diversity, equity and inclusion mean to you?





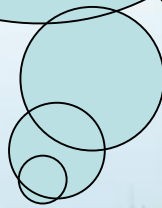
Acculturation Attitudes

- Assimilation – Newcomers adjust and adapt, if necessary by abandoning their native traditions, beliefs, and behaviors, in order to fit into the new society.
- Segregation – Newcomers are separated or marginalized from society and denied equal access to its institutions and entitlements.
- Integration - Newcomers are expected to understand and respect basic Canadian values, and Canadians are expected to understand and respect the cultural differences newcomers bring to Canada.

(Citizenship and Immigration Canada, 2001)



**Gaps in our
knowledge, are filled
up with assumptions**



Video Clip

A family who has a child with disabilities voice

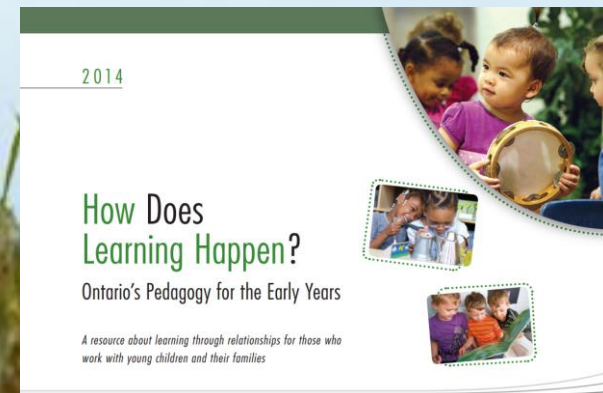


How Does Learning Happen?



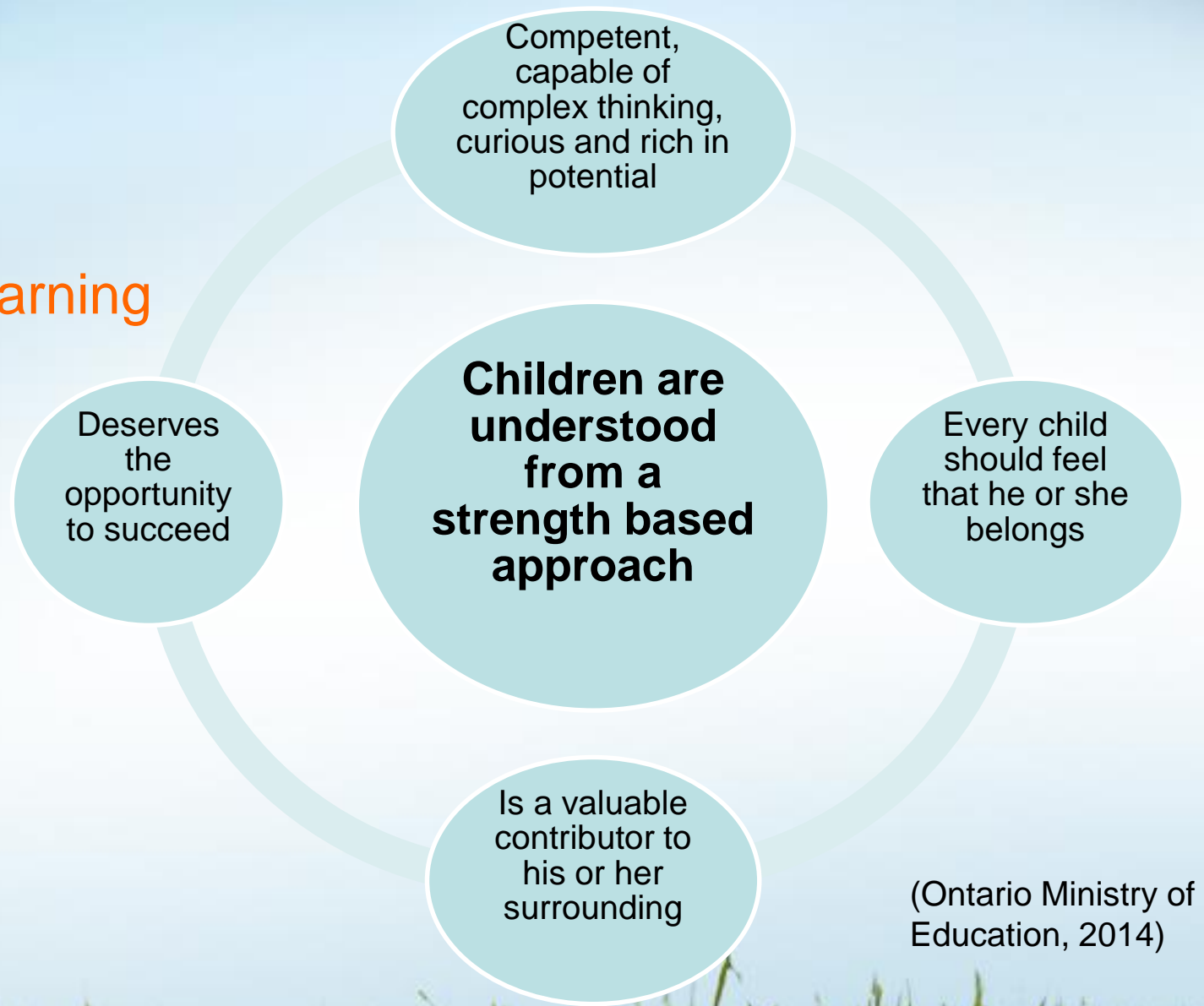
- Educators are competent and capable
- Curious and rich in experience
- Knowledgeable, caring, reflective, and resourceful professionals
- They bring diverse social, cultural and linguistic perspectives
- They collaborate with others to create engaging environments and experiences to foster children's learning and development

(Ontario Ministry of Education, 2014)





How Does Learning Happen?



(Ontario Ministry of Education, 2014)



How Does Learning Happen?

Families are composed of individuals who are competent and capable, curious and rich in experience



(Ontario Ministry of Education, 2014)

Pedagogy – The method and practice of teaching.

Culturally Relevant Pedagogy - pedagogy that empowers individuals intellectually, socially, emotionally, and politically by using cultural referents to impart knowledge, skills and attitudes.

(Ladson-Billings, 1994)



Case Studies



Problem: Time Constraints!!!

Solution: Begin small.





www.oise.utoronto.ca/atkinson

Bernice Cipparrone McLeod: bernice.cipparrone@utoronto.ca

Safra Najeemudeen: fnajeemu@ryerson.ca

